

July 28-1907

37-462 deeds

97

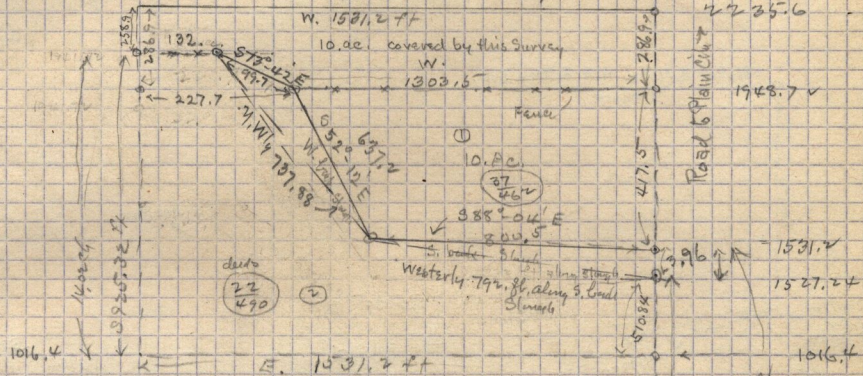
J. B. Alvord and wife Sarah E. Alvord - to David W. Hancock of West Weber, Weber Co

Jan'y 23-1901 - \$225.00 Pt. S.W. 1/4 Sec. 8, Twp. 6. N-R. 2. W. - Beg. at a point 1521.2 ft N. of S.E. cor. of 1/4 Sec. and at the South bank of Slough. Running thence N 47.5 ft. - thence W 1303.5 ft. to a point on the West bank of Slough - thence S 52-12' E along the S. bank of the Slough 637.2 ft. Thence S 38° 04' E, 800.5 ft. along the S. bank of said Slough to the place of beginning 10.22 acres

22-490 deeds

James B. Ririe & wife Elizabeth Ann Ririe to David W. Hancock Feb 9-1894

\$1000. - Pt. S.W. 1/4 Sec. 8, Twp. 6. N-R. 2. W. - Beg 23.14 chs N. of S.E. cor. of 1/4 Sec. on the South bank of Slough at high water. Thence Westerly down the Slough 12.00 chs - thence N.W. by 11.18 chs thence N 2.00 chs - S 14.02 chs - thence East 23.20 chs thence N 7.74 chs to beg. 21.02 acres



July 29-07

Traverse Table of Tract 462 Sec. 8, Twp. 6. N, R. 2. W.

Course	dist	N	S	E	W	sin	cos
West	1303.5				1303.5		
S 52° 12' E	637.2	290.54		503.45		.7901	.6129
S 38° 04' E	800.5		26.97	500.02		.9944	.0337
North	47.5						
		47.5			1303.5		

West line of Slough

S.E. 1/4 SW 1/4 Sec. 8